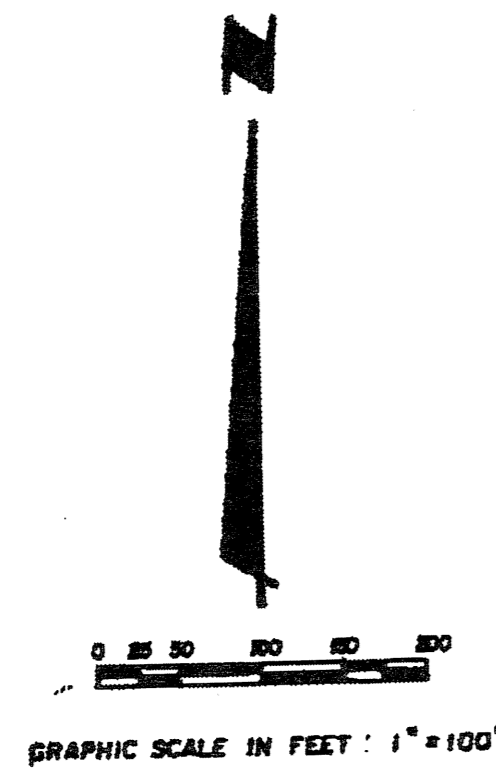


181st STREET SOUTH PLAT

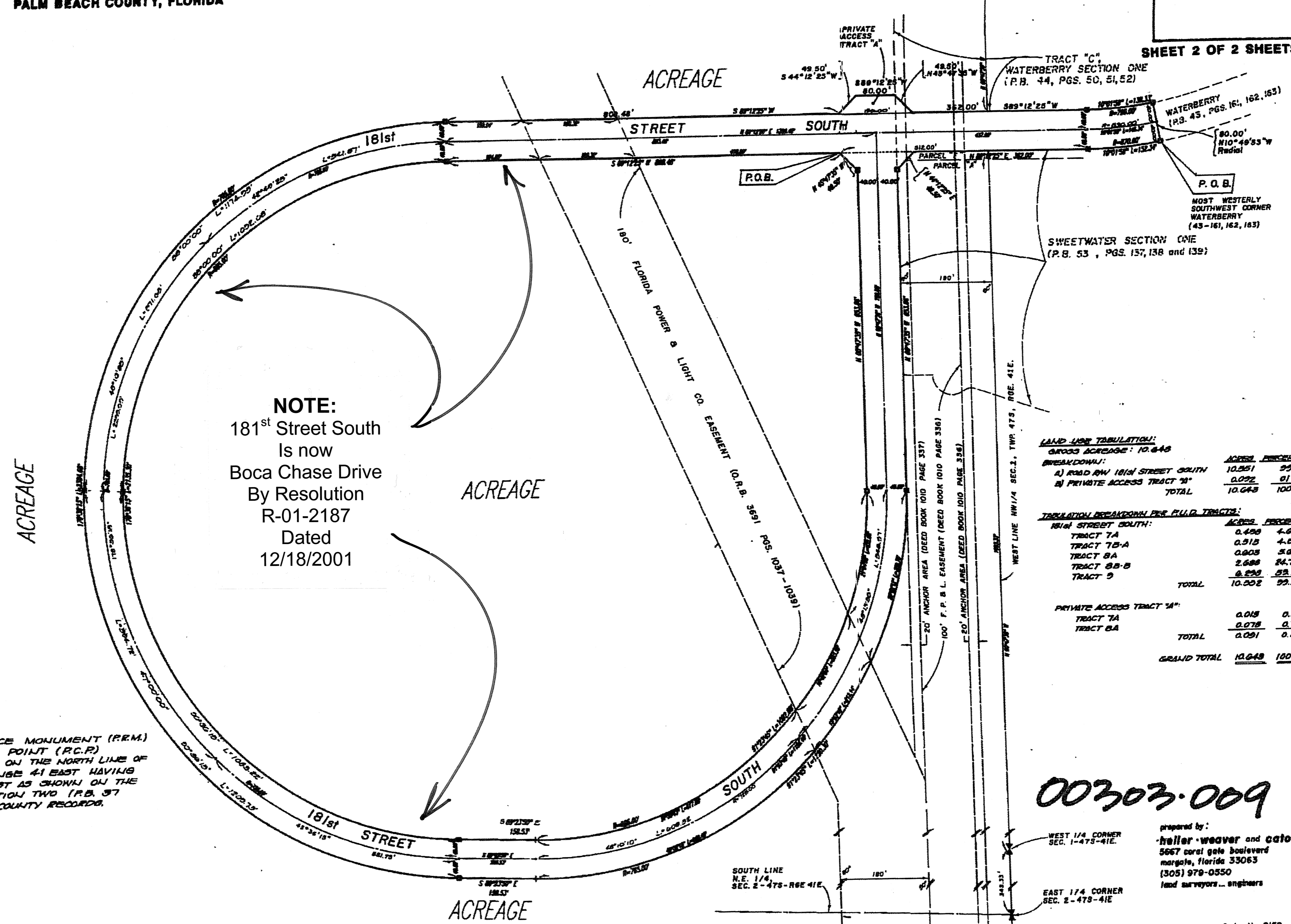
(A PORTION OF TRACT 7A, 7B-A, 8A, 8B AND TRACT 9,
BOCA CHASE - RIVIERA P.U.D.) BEING A REPLAT OF A PORTION OF TRACT 29,
'FLORIDA FRUIT LANDS COMPANY'S SUBDIVISION NO. 2',
OF SECTION 1, TOWNSHIP 47 SOUTH, RANGE 41 EAST (P.B. 1 - PG. 102 P.B.C.R.)
AND A REPLAT OF A PORTION OF PARCEL 'C', WATERBERRY SECTION ONE (P.B. 44 - PGS. 50, 51 AND 52 P.B.C.R.)

AND A REPLAT OF A PORTION OF PARCELS 'A' AND 'F'
SWEETWATER SECTION ONE (P.B. 53 - PGS. 137, 138 AND 139 P.B.C.R.) AND
A PORTION OF THE NORTHEAST ONE-QUARTER (NE 1/4)
OF SECTION 2, TOWNSHIP 47 SOUTH, RANGE 41 EAST,
PALM BEACH COUNTY, FLORIDA



8

SHEET 2 OF 2 SHEETS



NOTE:
181st Street South
Is now
Boca Chase Drive
By Resolution
R-01-2187
Dated
12/18/2001

SURVEYOR'S NOTES:

- 1) [Symbol] INDICATES PERMANENT REFERENCE MONUMENT (P.R.M.)
- 2) [Symbol] INDICATES PERMANENT CONTROL POINT (P.C.P.)
- 3) BEARINGS SHOWN HEREON ARE BASED ON THE NORTH LINE OF SECTION 1, TOWNSHIP 47 SOUTH, RANGE 41 EAST HAVING AN ASSUMED BEARING OF DUE WEST AS SHOWN ON THE RECORD PLAT OF BOCA CHASE SECTION TWO (P.B. 37 PAGES 192 AND 193) PALM BEACH COUNTY RECORDS.

LAND USE TABULATION:

GRAND ACREAGE:	10.648	
BREAKDOWN:		
A) ROAD (NW 181st STREET SOUTH)	10.551	99%
B) PRIVATE ACCESS TRACT 'A'	0.097	01%
TOTAL	10.648	100%

TABULATION BREAKDOWN PER FULL TRACTS:

NW 1/4 STREET SOUTH:		
TRACT 7A	0.490	4.60%
TRACT 7B-A	0.510	4.84%
TRACT 8A	0.600	5.67%
TRACT 8B-B	2.688	25.18%
TRACT 9	6.352	59.81%
TOTAL	10.552	99.10%

PRIVATE ACCESS TRACT 'A':

TRACT 7A	0.018	0.18%
TRACT 8A	0.079	0.76%
TOTAL	0.097	0.87%

GRAND TOTAL 10.648 100%

00303-009

prepared by:
Heller, Weaver and Gato Inc.
5657 Coral Gate Boulevard
Margate, Florida 33063
(305) 978-0550
land surveyors...engineers

Order No. 8159